

DIVING LUNDY

This information booklet should tell you all you need to know about diving around Lundy and help you to plan your holiday.

LUNDY



WHY DIVE LUNDY?

The simple answer is because the marine environment around Lundy is spectacular, and it provides divers with unique experiences that they will treasure. Lundy was established as a voluntary Marine Nature Reserve in 1971, this was followed with the first Marine Nature Reserve designation in 1986. Since then, the island's importance has been recognized through further designations as a Special Area of Conservation in 2000 and was nominated as the first Marine Conservation Zone (MCZ) in 2010. Along with these designations an area to the east of the island has been declared as a No Take Zone since 2003, this means that no fishing or collection of sea life of any kind can take place in this area. We ask that you respect this and report any activities to the Warden.

The high level of protection at Lundy has ensured that our marine life is amazing and, along with spectacular scenery, will allow you to experience some of the most varied diving in the U.K. Many divers return to Lundy again and again to dive in the unique waters littered with wrecks and diverse marine life including beautiful anemones and corals.

Lundy's waters are home to two protected wreck sites: *Iona II* and *Gull Rock*. Both wrecks are protected by the Protection of Wrecks Act 1973 due to their significance and therefore cannot be dived without a licence. A new dive trail for the *Iona II* has been produce and received an award in September 2015. Further details on the trail and the history of the *Iona II* can be found through the Diving pages on our website (www.lundyisland.co.uk).



DIVING AROUND LUNDY

Lundy's location, on the edge of the Atlantic, means that we enjoy unpolluted water which can have excellent visibility, particularly in the calm summer months. However, the position of the island means it can be subjected to very strong tidal currents so it is essential that you understand the tidal streams at each site. It is advisable to use one of the experienced dive charter boats as their skippers have excellent knowledge of the dive sites making the whole experience safer and more enjoyable. Shore diving is limited to only a couple of safe entry points from the shore.

For more information on the dive sites if Lundy please visit our Discover Lundy webpage: [Dive sites \(landmarktrust.org.uk\)](http://landmarktrust.org.uk).

The Lundy Warden oversees the management of the Marine Conservation Zone, No Take Zone and Special Area of Conservation including the day-to-day running of the dive facilities and is happy to advise you on any aspect of diving on Lundy. Please feel free to contact the Warden before your visit on warden@lundyisland.co.uk or come and say hello during your visit.

We encourage safe diving practices therefore each group should nominate a diving officer who is responsible for organizing and supervising the group's diving activities. The diving officer is also responsible for raising awareness of the group as regards the legal protection of Lundy's marine protected area and should ensure that all divers abide by the Code of Conduct (included in this booklet).

Shellfish: Please be aware that the regulations surrounding diver-caught shellfish have changed and all those wishing to take shellfish (scallops, crabs or lobster) must apply for a license from the Devon and Severn IFCA. However, many local charters operate a no take policy and their capture is not encouraged. In December 2013, a new byelaw was passed stating that no crawfish (spiny lobster) can be taken by anyone from the Marine Conservation Zone at Lundy.





DIVE FACILITIES

Please book facilities a minimum of one month prior to your visit. Please note, air fills are fulfilled by trained island staff and last-minute bookings cannot be accommodated.

The Beach Building has been built with divers in mind and offers:

- Basic storage/changing areas free of charge. Please note that these must be booked in advance and are subject to availability.
- Dunk tank for washing kit. Please note that during dry spells, the water may not be refreshed as frequently due to water restrictions and that the indoor tap is not for washing kit.
- The island has its own compressor to supply air up to 230bar. Air fills are completed by trained island staff and must be booked at least one month in advance.
 - Please ensure that tanks are in test with a visible test stamp (those without a visible in-date test stamp cannot be filled).
 - Twin-sets are made up of two separate tanks and will be charged as such.
 - Please note that portable dive air compressors are not permitted on the island.

We can offer a Landover lift for luggage and/or people up to the top of the island; however, these must also be booked in advanced.

To book any of the dive facilities, including changing rooms, air fills and luggage transport, please fill in the Dive facilities Booking form, located on our website.

More details about facilities and payments will be sent out to your group organiser approximately 2 weeks prior to your visit.

ACCOMMODATION

Many divers come to Lundy for a weekend but for many this is not nearly enough to experience everything that Lundy has to offer. Staying on the island maximizes the time you spend diving and minimizes travel time. The range of accommodation includes self-catering properties and camping facilities. The Barn is our largest self-catering property and has space for up to fourteen people in two dormitory style rooms. It is advisable to book well in advance as island accommodation and facilities are limited. The full range of accommodation can be booked through our website www.lundyisland.co.uk or via the Lundy Shore Office (01237) 470 074. Please note that the Warden cannot process accommodation bookings.

THE LUNDY GENERAL STORE

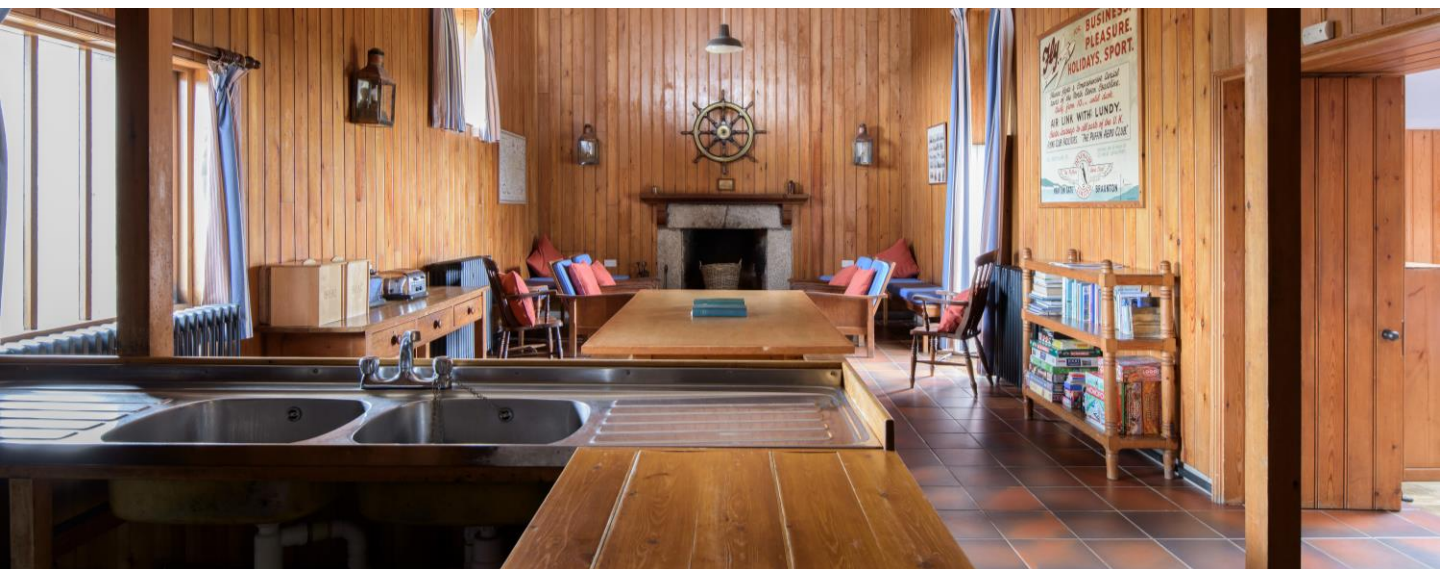
Lundy General Stores carries an extensive range of fresh, frozen and canned food, along with toiletries, household goods and souvenirs. A range of wines, beers and spirits are available from the store and Marisco Tavern. There is a good supply of fresh produce which is replenished on sailing days. The store also stocks t-shirts/hoodies/hats etc. and souvenirs.

Up to date shop opening times will be sent to your group organiser approximately 2 weeks prior to your visit.

MARISCO TAVERN

The Marisco Tavern is the focal point of island life for everyone on the island. Breakfast, lunch and dinner are served every day; please refer to the board in the Tavern for serving times and menus.

A variety of alcoholic and non-alcoholic beverages are available along with tea, coffee and soft drinks.





GETTING TO LUNDY

You can get to the island either on one of the charter boats, on your own boat or on our passenger and supply ship the MS Oldenburg. Fares and sailing times for the island's passenger and supply ship (MS Oldenburg) can be found on our website.

There is a luggage allowance of 20kg per person on the Oldenburg and anyone carrying luggage in excess of this will be charged accordingly. To arrange to transport of dive luggage such as cylinders please contact the Lundy Shore Office at least one month in advanced of your arrival on 01237 470074.

If you come to Lundy using one of the charter boat services or on your own boat, please note that there is a luggage transfer service available, all luggage must weigh no more than 20kg (excess will be charged for) and all food must arrive in sealed plastic containers to help keep Lundy rodent-free.

If you do decide to dive from your own vessel please be aware that conditions around Lundy can change very quickly and make sure that you carry all the appropriate safety equipment including a VHF radio or other means of communication. Please consult a reliable forecast prior to your arrival. Please note, petrol is not available on Lundy, so you must bring sufficient fuel for your stay if bringing your own vessel. *Please remember Lundy is a Marine Protected Area and you must exercise extreme caution when storing fuel and re-fueling your boat.*

The Landing Bay provides a sheltered anchorage when the winds are from the western quarter, but is vulnerable to winds from the East or North East. We ask that you avoid anchoring in areas other than the Landing bay where possible, to help protect our fragile marine life living on the seabed.

Please note that the maximum speed limit for all vessels operating within 100m of the island is 5 knots.

REPORTING SIGHTINGS

The waters around Lundy form a Special Area of Conservation (SAC) due to the importance of its marine habitats and diversity of species. To make sure we can continue to conserve our marine life effectively, we need your help to monitor and record our marine life through your sightings whilst diving and snorkeling.

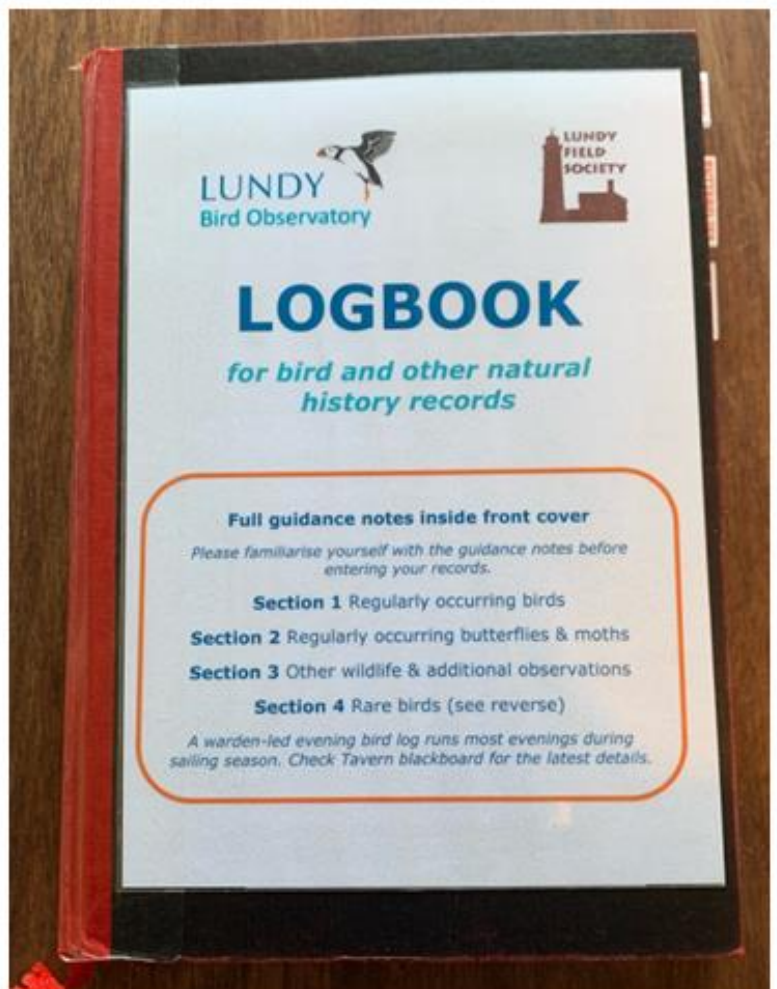
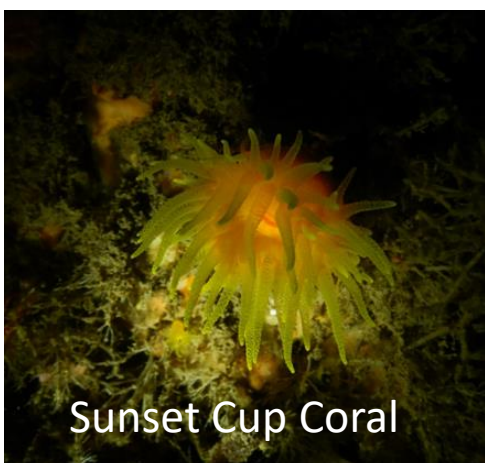
We would love to hear about your sightings of wildlife and see any photos!

We would also like to hear about any damage to wreck sites, significant pollution and anything else you think is concerning- you are our eyes and ears!

If you are staying on the island, you can enter your sightings into our wildlife logbook, located on the bookshelf in the Marisco Tavern.

Alternatively, if you aren't staying on the island, we would love you to email assistantwarden@lundyisland.co.uk with your sightings!

Thank you!





MARINE CODE OF CONDUCT

The marine protected area zoning scheme and No Take Zone apply to everyone, these are strictly enforced and much of the code of conduct is underpinned by law. This code is for everyone who visits Lundy to ensure that the marine life is protected for future generations. Please look after it!

GENERAL - APPLIES TO ALL VISITORS

- Do not disturb or remove any plant or animal within the Marine Protected Area (Marine Conservation Zone, Special Area of Conservation and Special Site of Scientific Interest).
- NO marine life is to be removed from the No Take Zone
- Lundy is now a rat free island. To keep it that way please take ALL rubbish home with you - especially perishables and check your boats and bags for rats before arriving.
- Report all interesting or unusual sightings of marine wildlife or any archaeological finds to the Warden.

Keep your distance from seals and their pups especially during the peak pupping season from 1st August to 30th November*.

ROCKPOOLING

- Please try to leave everything as you find it, always return rocks and seaweed as they were, these provide shelter, food and homes for wildlife.
- Do not collect or remove animals or plants in buckets or use nets
- Surveys and scientific monitoring may require a consent (consult with warden)

DIVING AND SNORKELING

- Control buoyancy to avoid contact with marine life be aware of the environment around you especially when taking photographs
- Try not to leave air bubbles in caves or overhangs
- Do not remove any items off any wrecks or any associated material on the seabed
- Gull Rock Wreck & Iona II are designated wreck sites, diving these without a license is illegal

- We do NOT encourage the taking of shellfish outside of the No Take Zone (NTZ). Should you wish to collect any shellfish, please be aware that take limits are in place, please speak to the warden to discuss our recommended take limits and for further information. Many charter boats operate a no take policy; the skippers decision is final.
- Do not remove crawfish (spiny lobsters) from the reserve
- Spear fishing is **not** permitted anywhere within the Marine Protected Area
- Follow the Seal code of conduct.

BOATING (ALL KINDS - KAYAKS TO CHARTER BOATS)

- Keep to a distance of 100 m from all nesting seabirds sites from 1st March to 15th August*.
- Reduce speed to less than 5 knots when 100m from seabird cliffs and rafting birds.
- Reduce speed to less than 5 knots when 100m from basking sharks, seals, cetaceans (whales, dolphins and porpoises).
- Do not change your course to directly approach them, let them come to you
- Use a WiSe accredited operator when chartering (www.wisescheme.org)
- Use the moorings as shown on the zoning scheme in Gannets, Brazen Ward and the Landing Bay where possible.
- Avoid anchoring; if it is necessary then anchor in less sensitive habitats such as sandy seabeds in the Landing Bay.
- Do not anchor or use shot lines within 100m of Knoll Pins
- Do not deploy any moorings. A license is required for permanent moorings and permission for a temporary mooring from the warden.
- The speed limit in the landing bay is 5 knots.
- Do not place any pots in the landing bay, they will be removed.

*This date is subject to change- the warden decision is final.

For enquiries of further information contact the Warden:
 warden@lundyisland.co.uk





LUNDY'S SEALS

Lundy is a nationally important site for the UK's globally rare Grey seals. During breeding season, Lundy is home to around 200 adults, and each year around 50 pups are born. Seals are naturally inquisitive and may be interested in water users, however they are also cautious. By adopting a safe and respectful approach we can keep the seals safe whilst you still have an enjoyable encounter.

Seals haul out to moult, breed, rest and digest their food. All of this requires energy! Hauled out seals have already made a heavy investment, energy wise, to get out of the sea. Flushing them back into the water increases the overall energy expenditure of these animals. Repeated disturbance impacts seals cumulatively along with other issues seals face in the wild.



During the summer pregnant females must build up their energy reserves to be able to feed their pups enough in the autumn for the pups to stand any chance of making it through their first winter. Disturbance in the summer has both invisible and delayed impacts. Additionally, during pupping season, heavily pregnant females carry their pups beneath them as they move about the rocks so any disturbance that makes them rush carelessly can have fatal consequences for themselves and their pups.



Lundy's seals are protected through the island's Special Area of Conservation and SSSI designations, the Conservation of Seals Act (1970) and the Wildlife and Countryside Act (1981). Around Lundy, it is illegal to recklessly disturb or injure Grey Seals.



IF YOU ENCOUNTER A SEAL:

FROM THE CLIFFS

- Stay at least **100m away** from any seals
- If you observe behaviour that could indicate stress, such as a seal looking at you, wide eyes or increased vocalisation, teeth bearing or movement away from you, please back off out of sight.
- If taking photos use a big zoom lens, stay at least 100m away and make sure your flash is turned off.



FROM A BOAT OR SMALL CRAFT

- Keep your boats speed below **5 knots** and stay at least **100m away** from the shoreline
- Never enter the water within 200m of a seal on land

UNDER THE WATER

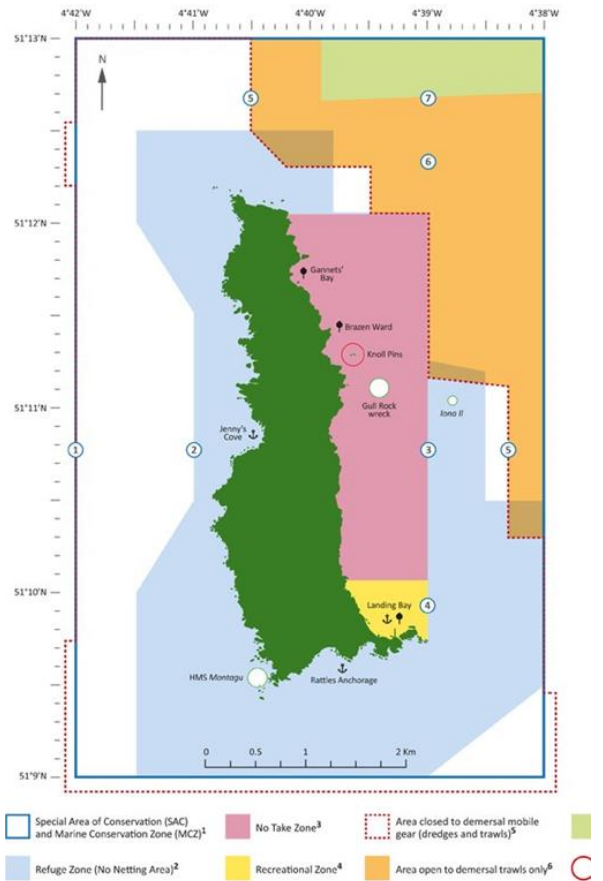
- Never directly approach seals or attempt to follow them. Let them come to you on their own terms if they choose but remember you have now distracted them from their daily routine.
- Please refrain from touching or feeding seals and do not bring toys into the water to 'play' with the seals.
- If taking photos, please make sure the flash is turned off, avoid sharing photos of you and a seal together as this doesn't reflect best practice.



ANGLING ON LUNDY

Please help us to protect our wildlife by following the Lundy Marine Protected Area Angling Code of Conduct:

- **No fishing** is allowed within the **No Take Zone** (indicted in **pink** on map).
- Catch and release all fish if not going to be used
- Release all **wrasse** species, **tope**, **red band fish**, **bull huss** and **conger eels** where they are caught (see below).
- Use barbless hooks
- Avoid using a gaff
- **Fish above the reef** when fishing in reef areas, do not fish on the bottom to avoid entanglement
- Only retain sufficient fish for **personal consumption** and return all unwanted catch to the sea **unharmd**.
- **Do not collect any bait** from the intertidal area
- Fishing of any type is **not permitted** within the area of a designated wreck site (white circles on the map) ○



PLEASE RELEASE THE FOLLOWING SPECIES ALIVE IF CAUGHT:

