

Calverley Old Hall

Community Space Access Guide



Introduction

Thank you for your interest in the Calverley Old Hall Community Space. Whilst we have done our best to make the Space as accessible as possible, as a historic building there are some limitations. This guide is designed to give you all the access information you need to prepare for your use of the space. This includes directions and information about the facilities on site.

Contents

- Introduction 1
- Getting here 2
- External access 3
- Inside the Community Space 8

Getting here

By Road

Calverley Old Hall is located on Woodhall Road in Calverley.

Sat Nav postcode: LS28 5NL

What3Words: ///glue.hits.slides

The Community Space is accessed via a private track which goes around the whole site. The entrance and parking space are at the rear of the building.

There is one parking space to the rear of the building. There is also ample free on-street parking on Woodhall Road and in the neighbouring residential streets. Please park with consideration for our neighbours.

By Bus

The 60/60A bus runs between Leeds and Keighley. The bus stop is on Woodhall Road, approximately 150 metres and a 3-minute walk from the Community Space.

By Train

The nearest train station is Apperley Bridge or New Pudsey, both have lines connecting to Leeds and Bradford.

Apperley Bridge is 2.3 miles away by car or a 50-minute walk.

New Pudsey is 2.3 miles away by car, or a 45-minute walk.

Please check local public transport services or taxi services for travel from the station to Calverley Old Hall.

By Bicycle

There are 2 bicycle racks to the rear of the building for Community Space users.

External access

Access track from Woodhall Road



- The track is not paved, it is a gravel/dirt track with grass and plants growing along the edges and down the centre in places. It is a private access track. Please do not park anywhere on this access track.

Back door (Red)



- The main entrance at the beginning of your hire of the Community Space is the red back door. It is near the parking space and accessed via a paved path past the bike racks.
- The path is paved from the access track to the door. The paved path is 77cm wide at the narrowest point.
- There is step free access at this entrance.
- The door opens away from you (push).
- The door is 74cm wide at the narrowest point.
- There is a small ramp on the threshold of the entrance, with a height of 1.5cm. It is 8cm wide. (See photo below.)



Door Lock



- A numerical code is required to unlock the red door. This will be sent to you in your booking confirmation email.
- The height of the door handle is 80cm high.
- The door code number buttons are a maximum of 88cm high.
- The numbers are sensitive, so you just need to touch them. Press the # button which is in the bottom right, above the handle. This will light up the other numbers. Enter your code then press the # button again. The lock will say “Door unlocked” and you can open the door by pushing the handle down.
- The lock will automatically lock itself when the door closes, so make sure you keep a note of your code on you, so you can access the door throughout your hire.

Access to the Community Garden and the front door (Brown)



(The Community Space is the right hand, open doorway in this photograph)

- There is step free access at this entrance.
- The gate is 86cm wide and 104cm high.
- The catch is on the other side of the gate, you need to push the latch down to release the gate. The latch is 100cm high.
- After pushing the latch down, push the gate to open it. The gate opens from the left and swings forward to the right.
- The gate is on a spring, so it will close automatically behind you.
- The path is paved from the access track to the door. The paved path to the front of the building is 87cm wide at the narrowest point.



Front door (Brown)

- This door will be locked at the beginning of your hire. You must access the building originally via the red door to the rear of the building. You can then unlock the front door from the inside using the key inside. (Please remember to lock it again from the inside before you leave at the end of your hire.)
- The door opens away from you (push).
- There is a small metal lip on the threshold of the entrance, it is 2.5cm high. (Photo below.)

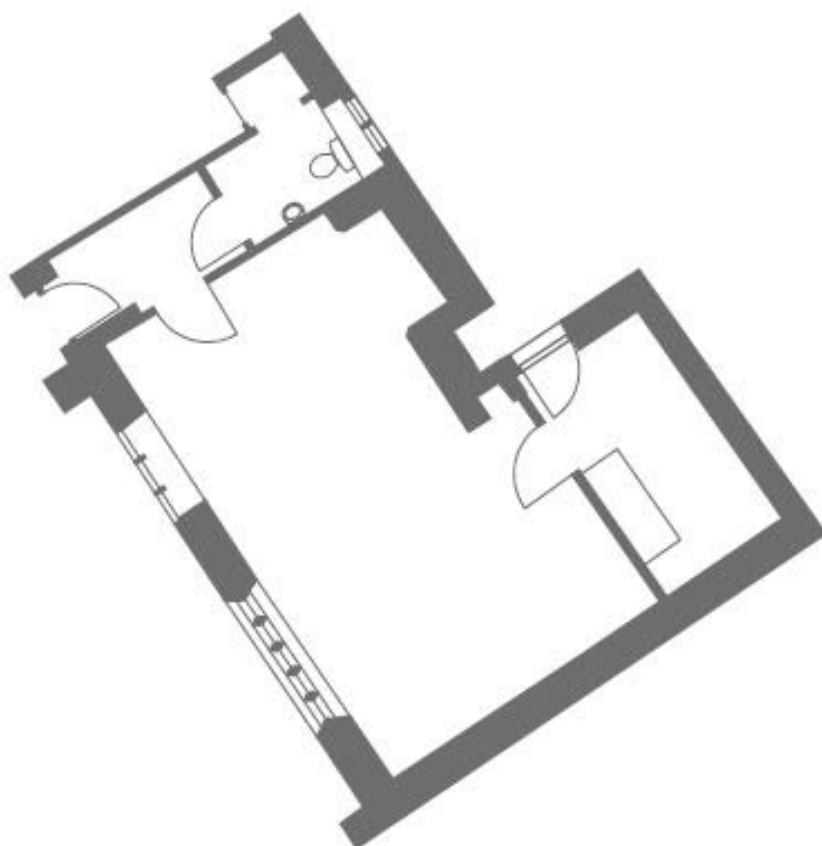


Inside the Community Space

When entering the Community Space at the beginning of your hire you will enter through the back, red door directly into the kitchenette. You can walk through the kitchenette to the main Community Space, and through the Community Space into the hallway to find the toilet. From the hallway you can access the front brown door, and the Community Garden.

- All light switches in the Community Space are 123cm high.
- There are coat hooks provided. In the kitchenette the hooks are 154cm high, in the hallway they are 158cm high.

Floor plan

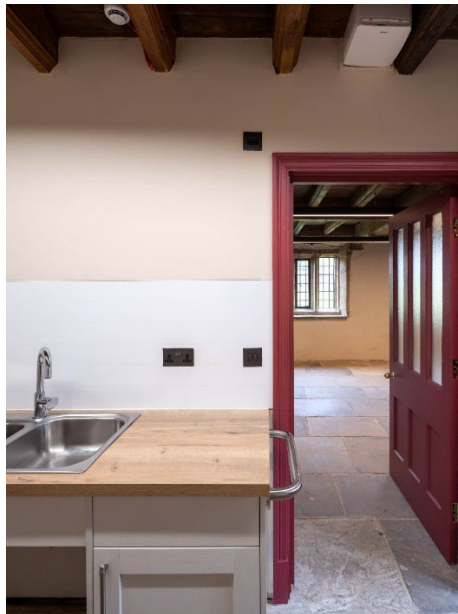


Kitchenette



- The kitchen work tops are 92cm high.
- The space under the sink is left empty to enable wheelchair users to reach the sink. The space under the sink is 72cm high.
- The work tops are 62cm deep.
- The fridge is positioned under the work top and opens from the left.

Community Space

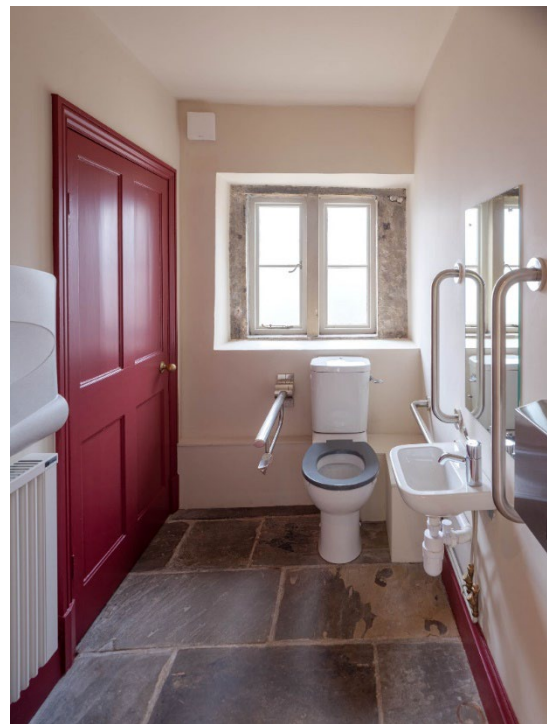


- The internal door from the kitchen opens into the main room (push from the kitchen). You do not need to turn the handle, it will just push open.
- The handle is 80cm high.
- The doorway is 83cm wide at the narrowest point.



- The internal door to the hallway opens into the main room (pull from the Community Space). You do not need to turn the handle, it will just push open.
- The handle is 102cm high.
- The doorway is 76cm wide at the narrowest point.
- Most plug sockets in the main room are 44cm high. There are two sockets under the TV which are 82cm high.

Toilet & Changing facilities



- The doorway is 76cm wide at the narrowest point.
- The silver accessible handle and lock is 76cm high.
- The gold door knob is 102cm high. You do not need to turn the gold door handle, the door will pull open without twisting the handle.
- Inside, turn the silver handle upwards to lock the door from the inside.
- The toilet space has a turning area of 100cm x 140cm. Therefore this may not be sufficient area for wheelchair users to turn inside the room. The hallway outside is 120cm wide.
- The toilet seat is 49cm high.
- The sink is 71cm high.
- Grab rails are provided. On the wall the horizontal grab rail is 66cm high. The grab rail which is folded up is 70cm high when in the lowered horizontal position.
- A baby changing unit is provided. When in the lowered horizontal position it is 105cm high. When folded up, the handle to pull it down for use is 143 cm high.