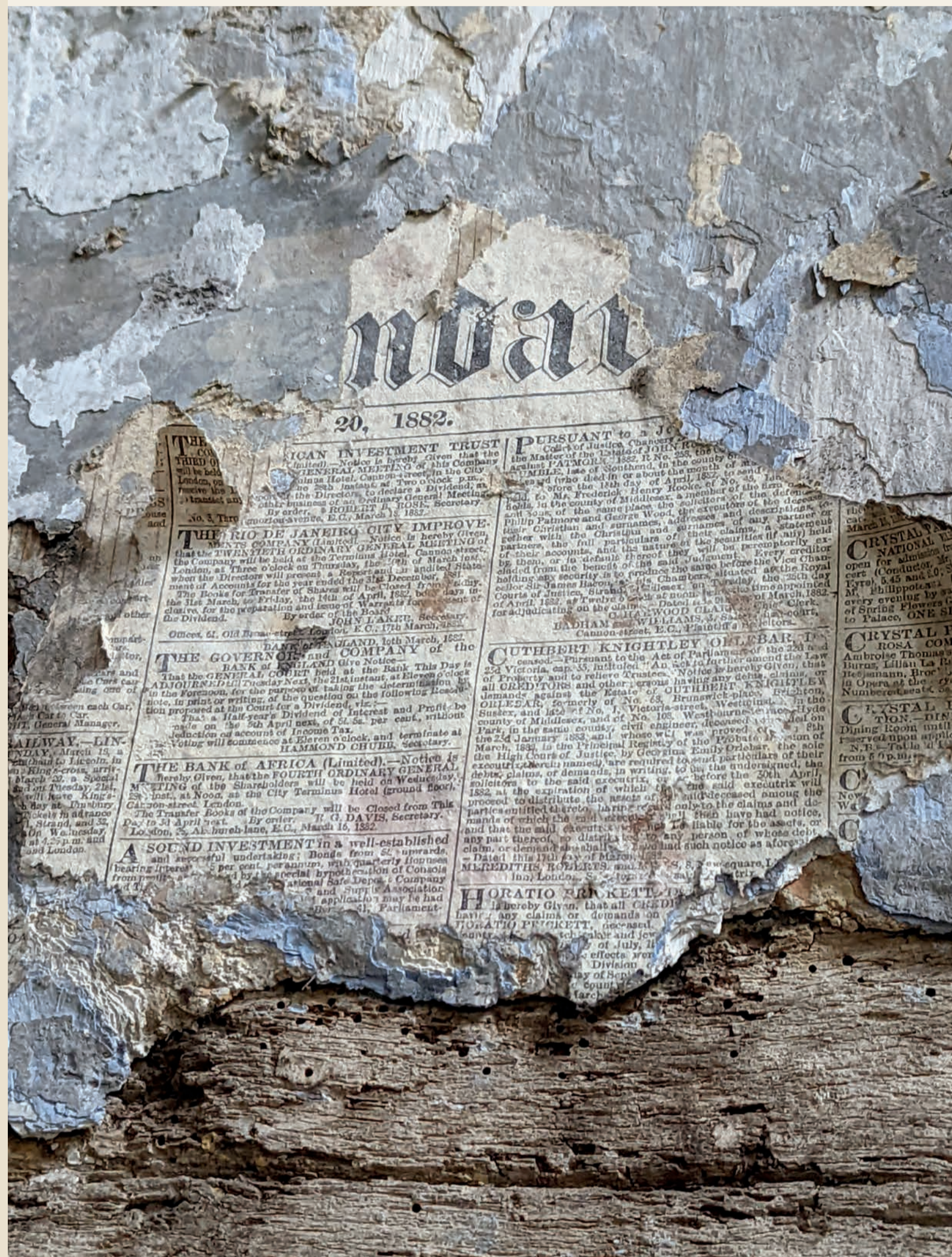


# Revealing Calverley Old Hall



A newspaper fragment from 1882 gives us a snapshot into a bygone era. Likely used as lining paper pasted onto a wall in one of the cottages, the newspaper mentions London's famous Crystal Palace which was destroyed by fire in 1936. Small finds like this remind us of the many people who have lived and worked in the building in its lifetime.

The renewal process has given us a new understanding of how the building has been adapted and changed over the years. Blocked windows and doorways, differing floor levels, the location of long-gone staircases and hidden fireplaces have all been revealed along the way, and we now know more about what the Old Hall might have looked like at different stages of its life. In addition to the discovery of the Painted Chamber, Calverley Old Hall has also revealed more about the lives of its previous inhabitants through a wide variety of fascinating finds.

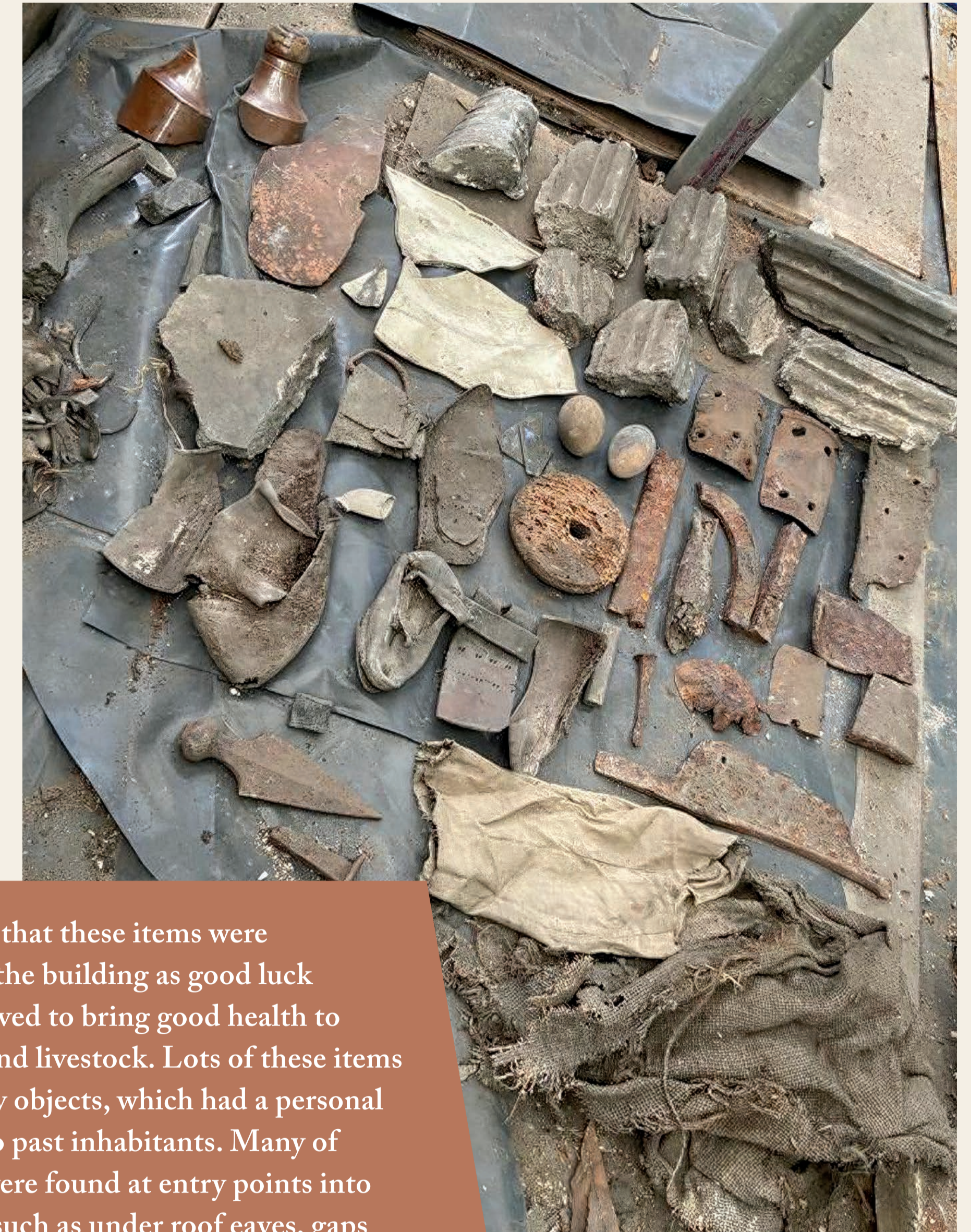


Left: A newspaper fragment from 1882, found pasted on a wall in the Solar Block.

Above: A small wooden-soled children's clog, found under the eaves of the roof.

## CONCEALED OBJECTS

Whilst some objects, such as the empty milk bottle you can see in the case, shed light on the working lives of the modern-day tenants, other discoveries at Calverley Old Hall have given us glimpses into the activities and beliefs of those who lived here in past centuries. During the renewal works, a wide range of smaller objects were discovered.



It is likely that these items were concealed in the building as good luck charms, believed to bring good health to inhabitants and livestock. Lots of these items were everyday objects, which had a personal connection to past inhabitants. Many of these items were found at entry points into the building such as under roof eaves, gaps within the walls, or around the fireplace and are believed to have been placed as a way of protecting the building from evil spirits.

Although some of the finds at Calverley Old Hall are earlier in date, most of the objects appear to have been concealed from the 18th century onwards, giving us a glimpse into the superstitions and beliefs of the past, which are now largely unfamiliar to us in the 21st century. These items are known as 'apotropaic objects'. Some of these objects are displayed in the case in front of you.

Above left: The Solar Block prior to restoration.

Above: A selection of some of the items found during roof works, including two hens' eggs, which are thought to have been included to protect the health of livestock at the Old Hall.

